

CHAPTER I

INTRODUCTION

1.1. Background of Study

In this world, there is no human who will escape from a problem, even though that human has a good or bad personality. There are various types of problems that are often experienced by humans such as, conflict, anxiety, mental health, loneliness, and depression. Conflict is also known as a problem that often occurs in human life, even conflict can trigger commotion among individuals or groups, and also conflict can occur in the humans mind. According to Shuib (2011:194), conflict begins when there is disagreement between the two parties, such as one party giving an explanation and the other party giving a counterstatement. Based on Wellek and Warren's (2013: 285) statement, conflict is something that is dramatic, and refers to the struggle between the two forces, actions, and responses. They also mean briefly that conflicts can arise due to disagreements.

There are two factors that cause conflict to arise, namely, internal factors and external factors. Internal conflict is a conflict that occurs in the heart or soul of a character in a story. Conflicts like this are usually experienced by humans themselves. The type of conflict included in internal conflict is conflict within a character or also known as psychological conflict. Internal conflict may be a negative side displayed by character problems with characters that require personal opinions or choices. Internal conflict is a problem or mistake faced by an

individual; a problem that requires a personal decision (Summer and Brewer in Shaleva, 2011:2).

There are many people who have experienced psychological conflict, for example, anxiety, mental illness, trauma, frustration, feeling unappreciated, curiosity, indecision, differences in principles, and contradictions. Things like this can be filmed so that the wider community understands how actual psychological conflict is experienced by an individual. This study raises the phenomenon of psychological conflicts in Euphoria's (2019) movie. This study is also concerned to find out how the personality development of the main character when the person getting psychological conflict. The theory used in this research is the theory of personality development by Sigmund Freud, also known as the Psychoanalytic Theory.

The theory of Human Personality Development or Psychoanalysis by Sigmund Freud is the most suitable theory to support this research. Which theory contains how the development of a human personality after experiencing an event in his life. In his theory, Sigmund Freud also explained that the Id, Ego, and Superego are the three elements of the human psyche. First, the Id is a personality system that is inherited or indoctrinated from birth. This system contains all the inherited psychological aspects such as instincts, impulses, and urges. Second, the ego is a personality system that develops from the id to be able to think realistically and prevent tension or conflict to find real objects to satisfy needs. Third, Superego is a personality system that is considered as morality in our

personality or our conscience. This personality system usually determines whether a person's actions are suitable or appropriate or vice versa.

Therefore, this study examine the psychological conflict depicted by the main character in the Euphoria movie series. Euphoria is an American teen drama television series created and written by Sam Levinson. In fact, there are several main characters in this movie series. However, this study only focuses on the dominant character namely, Rue Bennett. Rue Bennett played by an artist named Zendaya, she is a teenager who is drug-addict, struggling to recover, and struggling to find her identity.

Euphoria was filmed at Ulysses S. Grant High School in Los Angeles, California, and was shot at Sony Pictures Studios in Culver City, California, and Warner Bros. Outside California, filming took place in New York City, Singapore, and Warner Bros., studios in Leavesden Hertfordshire. The series also received positive reviews, with praise for the cinematography, score, performances by the cast (especially Zendaya, Schafer, Sweeney, and Domingo), and mature approach to subject matter. Euphoria premiered on June 16, 2019.

The series released its second season in July 2019. The second season premiered on January 9, 2022, and in February 2022 the series released its third season. The series has received numerous accolades, including a Primetime Emmy Award nomination for Outstanding Drama Series. Credit for her performance, Zendaya has won two Primetime Emmy Awards, a Critics' Choice Television Award, and a Golden Globe Award for Best Actress. Sydney Sweeney, Colman Domingo, and Martha Kelly also received Emmy nominations for their

acting, and Domingo won the award for Outstanding Guest Actor in a Drama Series.

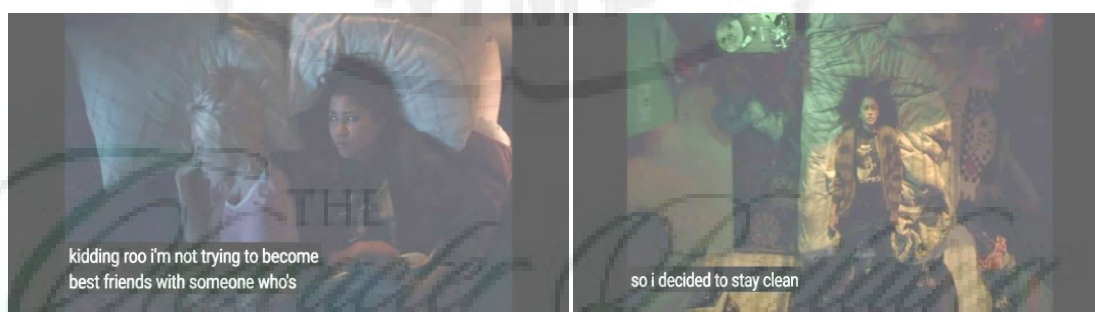
Picture 1.1 below is an example of preliminary data that the researcher obtained and analyzed using psychology approaches that conducted by Sigmund



Freud (1923) Id, Ego and Super-ego.

The primary data shows where Rue Bennett experiences psychological conflict:

- a. Id aspect, where it is said in the id aspect that humans will



experience psychological conflict if their desires are not fulfilled,

Picture 4 1.1 Preliminary Data

- b. such as when Rue Bennett did not inhale her drug additives. In this scene, Rue Bennett is having big problems with the person she loves,

her best friend, Jules. Then, she met a friend named Fesco who worked as a drug dealer.

- c. Super-ego aspect. Then, Rue Bennett bought the drug, and then Rue returned home, but the clock was showing that Rue Bennett was late returning home. Then her mother scolded her and already knew that she was doing drugs outside. But she still said she did not do that. Then in this scene Rue also had a conflict with her best friend.
- d. Ego aspect, at that time Rue Bennett did not want to rid herself of drugs, because according to her drugs were a sedative for every problem, then her best friend named Jules said, "I don't want to be a friend for someone who doesn't stop doing drugs, Rue! That's enough for me, Rue!" In the end Rue Bennett decided to rid her of drugs.

The previous study, to be specific " Psychological Conflict in the Main Character of the Film Paul Greengrass: Captain Philips" written by Rezky Amelia Anggraeni (2022). This article moreover examines the psychological conflict experienced by main characters. The result is that the author needs to find out what strife is. What mental issues are experienced by the main character and how does the psychological conflict affect the attitude of the most character.

Based on the observations of researchers, the example of the initial data above is marked by an image showing where the main character named Rue Bennett experiences psychological conflict she faces because Rue Bennett feels a dilemma to rid herself of the additives she has consumed, she feels that drugs it

solved the problem, but for his friends and family it had a very negative impact on him. Rue is also afraid that if she continues to consume these additives, her best friend will leave her and Rue Bennet's mother also observes that as long as Rue Bennet consumes these additives, Rue always comes home late at night and likes to sneak into her house.

This also often happens around us, even though we are not the ones who experience it directly, but people around us or those far from us have used drugs and of course, they have problems of inner conflict within themselves, whether it's because of family problems or even problems between people, which can make an individual think that drugs are the most appropriate solution, but in fact, drugs will kill that individual.

1.2. Problems of Study

- a. What kinds of psychological conflicts are experienced by main character?
- b. How the psychological conflict causes of effect for the main character?
- c. How the main character to overcome her psychological conflict?

1.3. Objectives of Study

- a. To find out kinds of psychological conflict that experiences by Rue Bennett in Euphoria Movie.
- d. To explain how internal conflict affects the psychology of the main character.

- e. To explain how the main character overcome the problem of her psychological conflict

1.4. Scope of Study

This study focuses on the kinds of psychological conflict experienced by the main character, what causes the psychological conflicts, and how the main character overcomes the psychological conflict. The limitation of this research is the psychological conflict faced by the main character in Sam Levinson's movie series "Euphoria".

1.5. Significances of Study

Based on the issues and targets put forward, the authors are expected to be able to propose two implications.

- a. Theoretically, the significances of this study are:
 - This research can be a useful and valuable reference for further research for students who study the same literary works, such as movies.
 - Increase and develop the knowledge of students majoring in English literature who will start their research.
 - This research can also be used as reading for literary connoisseurs who wish to use psychoanalysis.

b. Practically, the significances of this study is are:

- Practically, readers can used this research as a comparison with other studies.
- This research can be used as consideration for English Literature Students to motivate new ideas or ideas that are more creative and innovative in the future.
- This research can be used to tell how to deal with psychological conflict againts fellow human and how to increase self-love and self confidence.



UNIVERSITAS NEGERI MEDAN
UNIMED

THE
Character Building
UNIVERSITY