

# Submission

mail.google.com/mail/u/0/#inbox/FMfcgwxDrIVmnGzzMpJkdlnBKmt5BsGh

Apps: Bentham Open :: Pu... Guide for authors |... Expo 2020 Volunte... Gmail YouTube Maps Google

Gmail Search mail

Compose

Inbox 384

Starred

Snoozed

Sent

Drafts 110

134 of 2,217

Your manuscript CSITE\_2019\_402 has been sent for review Inbox x

**Case Studies in Thermal Engineering** <Evisesupport@elsevier.com>  
to me

Oct 14, 2019, 12:34 PM

*This message was sent automatically.*

Reference: CSITE\_2019\_402  
Title: THE EFFECT OF CARBON BLACK COMPOSITION IN NATURAL RUBBER COMPOUND  
Journal: Case Studies in Thermal Engineering

Dear Dr. Rianna,

I am currently identifying and contacting reviewers who are acknowledged experts in the field. Since peer review is a voluntary service it can take time to find reviewers who are both qualified and available. While reviewers are being contacted, the status of your manuscript will appear in EVISE as 'Reviewer invited'.

Once a reviewer agrees to review your manuscript, the status will change to 'Under Review'. When I have received the required number of expert reviews, the status will change to 'Ready for Decision' while I evaluate the reviews before making a decision on your manuscript.

To track the status of your manuscript, please log into EVISE and go to 'My Submissions' via: [http://www.elsevier.com/elsevierfaces/pages/navigation/NavController.jsp?JRNL\\_ACR=CSITE](http://www.elsevier.com/elsevierfaces/pages/navigation/NavController.jsp?JRNL_ACR=CSITE)

Kind regards,

Case Studies in Thermal Engineering

**Have questions or need assistance?**  
For further assistance, please visit our [Customer Support](#) site. Here you can search for solutions on a range of topics, find answers to frequently asked questions and learn more about EVISE via interactive tutorials. You can also talk 24/6 to our customer support team by phone and 24/7 by live chat and email.

-----  
Copyright © 2018 Elsevier B.V. | [Privacy Policy](#)  
Elsevier B.V., Radarweg 29, 1043 NX Amsterdam, The Netherlands, Reg. No. 33156677.

[Message clipped] [View entire message](#)

# Proses Revisi

mail.google.com/mail/u/0/#inbox/FMfcgxdSfclRbGhbxMDnjdxJfkMQWxL

Apps Bertham Open : Pu... Guide for authors [...] Expo 2020 Volunte... Gmail YouTube Maps Google

Gmail Search mail

Compose

Inbox 384

Starred

Snoozed

Sent

Drafts 110

100 of 2,217

Reviews complete and decision pending for your manuscript CSITE\_2019\_402

Case Studies in Thermal Engineering <Evisesupport@elsevier.com> to me

Nov 5, 2019, 11:02 PM

Reference: CSITE\_2019\_402  
Title: THE EFFECT OF CARBON BLACK COMPOSITION IN NATURAL RUBBER COMPOUND  
Journal: Case Studies in Thermal Engineering

Dear Dr. Rianna,

I am pleased to inform you that I have received all the required reviews, which I will now evaluate before making a decision on your manuscript referenced above.

In the event that I need to seek the opinion of an additional reviewer, you may see the status of your manuscript revert briefly from 'Ready for Decision' to 'Under Review'.

To track the status of your manuscript, please log into EVISEe [http://www.evise.com/evise/face/pages/navigation/NavController.jsp?JRNL\\_ACR=CSITE](http://www.evise.com/evise/face/pages/navigation/NavController.jsp?JRNL_ACR=CSITE) and go to 'My Submissions'.

I will inform you once I have made a decision.

Thank you again for submitting your manuscript to Case Studies in Thermal Engineering and for giving me the opportunity to consider your work.

Kind regards,

Case Studies in Thermal Engineering

# Revisi

Gmail

Search mail

Compose

Inbox 384

Starred

Snoozed

Sent

Drafts 110

## Decision on your submission to Case Studies in Thermal Engineering

Huihe Qiu (Case Studies in Thermal Engineering) <Evisesupport@elsevier.com>  
to me

Tue, Nov 5, 11:05 PM

Ref: CSITE\_2019\_402  
Title: THE EFFECT OF CARBON BLACK COMPOSITION IN NATURAL RUBBER COMPOUND  
Journal: Case Studies in Thermal Engineering

Dear Dr. Rianna,

Thank you for submitting your manuscript to Case Studies in Thermal Engineering.

I have completed my evaluation of your manuscript. The reviewers recommend reconsideration of your manuscript following revision. I invite you to resubmit your manuscript after addressing the comments below.

When revising your manuscript, please consider all issues mentioned in the reviewers' comments carefully; please outline in a cover letter every change made in response to their comments and provide suitable rebuttals for any comments not addressed. Please note that your revised submission may need to be re-reviewed.

If you would like to revise your manuscript, you first need to accept this invitation:

- Log into EVISE® at [http://www.elsevier.com/elsevier/faces/pages/navigation/NavController.jspx?JRNL\\_ACR=CSITE](http://www.elsevier.com/elsevier/faces/pages/navigation/NavController.jspx?JRNL_ACR=CSITE)
- Locate your manuscript under the header 'My Submissions that need Revisions' on your 'My Author Tasks' view, and
- Click on 'Agree to Revise'.

Upon agreeing to revise your manuscript, your revision deadline will be displayed in your 'My Author Tasks' view.

When you are ready, please submit your revision by logging into EVISE® at: [http://www.elsevier.com/elsevier/faces/pages/navigation/NavController.jspx?JRNL\\_ACR=CSITE](http://www.elsevier.com/elsevier/faces/pages/navigation/NavController.jspx?JRNL_ACR=CSITE)

Case Studies in Thermal Engineering values your contribution and I look forward to receiving your revised manuscript.

Kind regards,

Huihe Qiu  
Editor-in-Chief  
Case Studies in Thermal Engineering

### Editor and Reviewer Comments: -Reviewer 1

- The manuscript entitled "The effect of carbon black composition in natural rubber compound" is well written and systematically explained. However, minor revision is require for further improvement of manuscript quality according to the points below:

- a) The discussion in the Introduction part need further improvement by inserting more references regarding natural rubber recent studies.
- b) Figure 1 is unclear, there is no image in Figure 1b. Please kindly revise.
- c) Please gives the description of S0, S1, S2 ..... in Table 1.
- d) The author recommended to change the scientific form for numbering in point form "." for decimals. Please revise.

### Have questions or need assistance?

For further assistance, please visit our [Customer Support](#) site. Here you can search for solutions on a range of topics, find answers to frequently asked questions, and learn more about EVISE® via interactive tutorials. You can also talk 24/5 to our customer support team by phone and 24/7 by live chat and email.

Copyright © 2018 Elsevier B.V. | [Privacy Policy](#)

Elsevier B.V., Radarweg 29, 1043 NX Amsterdam, The Netherlands, Reg. No. 33156677.

# Pengembalian Hasil Revisi

mail.google.com/mail/u/0/#inbox/FMfcgxdSfKFrZldJRcQJM8sCdzdhwR

Apps Bentham Open :: Pu... Guide for authors |... Expo 2020 Volunte... Gmail YouTube Maps Google

Gmail Search mail

Compose

Inbox 384

Starred

Snoozed

Sent

Drafts 110

86 of 2,217

Your manuscript CSITE\_2019\_402\_R1 has been sent for review Inbox x

**Case Studies in Thermal Engineering** <Evisesupport@elsevier.com>  
to me

Sun, Nov 10, 7:57 PM

*This message was sent automatically.*

Reference: CSITE\_2019\_402\_R1  
Title: THE EFFECT OF CARBON BLACK COMPOSITION IN NATURAL RUBBER COMPOUND  
Journal: Case Studies in Thermal Engineering

Dear Dr. Rianna,

I am currently identifying and contacting reviewers who are acknowledged experts in the field. Since peer review is a voluntary service it can take time to find reviewers who are both qualified and available. While reviewers are being contacted, the status of your manuscript will appear in EVISE® as 'Reviewer Invited'.

Once a reviewer agrees to review your manuscript, the status will change to 'Under Review'. When I have received the required number of expert reviews, the status will change to 'Ready for Decision' while I evaluate the reviews before making a decision on your manuscript.

To track the status of your manuscript, please log into EVISE® and go to 'My Submissions' via: [http://www.evise.com/evise/faces/pages/navigation/NavController.jspx?JRNL\\_ACR=CSITE](http://www.evise.com/evise/faces/pages/navigation/NavController.jspx?JRNL_ACR=CSITE)

Kind regards,

Case Studies in Thermal Engineering

**Have questions or need assistance?**  
For further assistance, please visit our [Customer Support](#) site. Here you can search for solutions on a range of topics, find answers to frequently asked questions, and learn more about EVISE® via interactive tutorials. You can also talk 24/5 to our customer support team by phone and 24/7 by live chat and email.

Copyright © 2018 Elsevier B.V. | [Privacy Policy](#)

Elsevier B.V., Radarweg 29, 1043 NX Amsterdam, The Netherlands, Reg. No. 33156677.

# Accepted

The screenshot shows a Gmail interface with a navigation sidebar on the left containing 'Compose', 'Inbox (384)', 'Starred', 'Snoozed', 'Sent', and 'Drafts (110)'. The main content area displays an email from Huihe Qiu (Case Studies in Thermal Engineering) dated Tue, Nov 12, 2:22 PM. The email subject is 'Your manuscript CSITE\_2019\_402\_R1 has been accepted'. The body text includes a reference to the manuscript, a congratulatory message, and information about the production process. It also includes contact information for Huihe Qiu, Editor-in-Chief of Case Studies in Thermal Engineering, and a link to the Customer Support site. The footer contains copyright information for Elsevier B.V. and a privacy policy link.

mail.google.com/mail/u/0/#inbox/FMfgxwDsRlQjIXpKXmNktNjtXnGjdWL

Apps — Bentham Open :: Pu... Guide for authors |... Expo 2020 Volunte... Gmail YouTube Maps Google

Gmail Search mail

71 of 2,217

**Your manuscript CSITE\_2019\_402\_R1 has been accepted** Inbox x

**Huihe Qiu (Case Studies in Thermal Engineering)** <EvisSupport@elsevier.com>  
to me

Tue, Nov 12, 2:22 PM

Ref: CSITE\_2019\_402\_R1  
Title: THE EFFECT OF CARBON BLACK COMPOSITION IN NATURAL RUBBER COMPOUND  
Journal: Case Studies in Thermal Engineering

Dear Dr. Rianna,

I am pleased to inform you that your paper has been accepted for publication. My own comments as well as any reviewer comments are appended to the end of this letter.

Your accepted manuscript will now be transferred to our production department. We will create a proof which you will be asked to check. You can read more about this [here](#). Meanwhile, you will be asked to complete a number of online forms required for publication. If we need additional information from you during the production process, we will contact.

Thank you for submitting your work to Case Studies in Thermal Engineering. We hope you consider us again for future submissions.

Kind regards,

Huihe Qiu  
Editor-in-Chief  
Case Studies in Thermal Engineering

**Comments from the editors and reviewers:**  
- Reviewer 1

**Have questions or need assistance?**  
For further assistance, please visit our [Customer Support](#) site. Here you can search for solutions on a range of topics, find answers to frequently asked questions, and learn more about EVISEe via interactive tutorials. You can also talk 24/5 to our customer support team by phone and 24/7 by live chat and email.

Copyright © 2018 Elsevier B.V. | [Privacy Policy](#)  
Elsevier B.V., Radarweg 29, 1043 NX Amsterdam, The Netherlands, Reg. No. 33156677.

Compose

Inbox 384

- Starred
- Snoozed
- Sent
- Drafts 110

### Track your article [CSITE\_100566] accepted in Case Studies in Thermal Engineering

Inbox x

Elsevier - Article Status <Article\_Status@elsevier.com>  
to me

Tue, Nov 12, 4:05 PM

Please note this is a system generated email from an unmanned mailbox.  
If you have any queries we really want to hear from you via our 24/7 support at <http://help.elsevier.com>

Article title: THE EFFECT OF CARBON BLACK COMPOSITION IN NATURAL RUBBER COMPOUND  
 Reference: CSITE\_100566  
 Journal title: Case Studies in Thermal Engineering  
 Article Number: 100566  
 Corresponding author: Dr. Martha Rianna  
 First author: Dr Martha Rianna  
 Dear Dr. Rianna,

Your article THE EFFECT OF CARBON BLACK COMPOSITION IN NATURAL RUBBER COMPOUND will be published in Case Studies in Thermal Engineering.

To track the status of your article throughout the publication process, please use our article tracking service:

<https://authors.elsevier.com/tracking/article/details.do?aid=100566&jid=CSITE&surname=Rianna>

For help with article tracking: [http://help.elsevier.com/app/answers/detail/a\\_id/90](http://help.elsevier.com/app/answers/detail/a_id/90)

Yours sincerely,  
Elsevier Author Support

HAVE A QUERY?  
We have 24/7 support to answer all of your queries quickly.  
<http://help.elsevier.com>

UNRIVALLED dissemination for your work  
When your article is published, it is made accessible to more than 15 million monthly unique users of ScienceDirect, ranging from scientists, researchers, healthcare professionals and students. This ensures that your paper reaches the right audience, wherever they may be on the globe, and that your research makes the greatest impact possible.

> Find new research yourself at: [www.sciencedirect.com](http://www.sciencedirect.com)

#### SENDER INFORMATION

This e-mail has been sent to you from Elsevier Limited, The Boulevard, Langford Lane, Kidlington, Oxford, OX5 1GB, United Kingdom. To ensure delivery to your inbox (not bulk or junk folders), please add [Article\\_Status@elsevier.com](mailto:Article_Status@elsevier.com) to your address book or safe senders list.

PRIVACY POLICY  
Please read our privacy policy.

<http://www.elsevier.com/privacypolicy>

[T-10b-20150414]

- Compose
- Inbox 384
- Starred
- Snoozed
- Sent
- Drafts 110

Offprints Order form completed for your article [CSITE\_100566] Inbox X

Elsevier - Author Forms <Article\_Status@elsevier.com> Fri, Nov 15, 3:05 PM

**Be careful with this message**  
This message contains one or more attachments that can't be verified as safe. Avoid downloading them unless you know the sender and are confident that this email is legitimate.

Looks safe

Please note this is a system generated email from an unmanned mailbox  
If you have any queries we really want to hear from you via our 24/7 support at <http://service.elsevier.com>

Article title: The effect of carbon black composition in natural rubber compound  
Article reference: CSITE\_100566  
Journal title: Case Studies in Thermal Engineering  
Article Number: 100566  
Corresponding author: Dr. Eva Marlina Ginting  
First author: Dr Eva Marlina Ginting

Dear Dr. Ginting,

Please find attached a copy of the "Offprints Order Form" which you completed online on 15-NOV-2019. If there are any details missing or incorrect on the Offprint Order Form, please alert us immediately.

If you have any questions, please do not hesitate to contact us. To help us assist you, please quote our article reference CSITE\_100566 in all correspondence.

We are committed to publishing your article as quickly as possible.

**HAVE QUESTIONS OR NEED ASSISTANCE?**  
For further assistance, please visit our Customer Support site where you search for solutions on a range of topics and find answers for frequently asked questions. You can also talk to our customer support team by phone 24 hours a day from Monday-Friday and 24/7 by live chat and email. Get started at > <http://service.elsevier.com>

© 2016 Elsevier Ltd | Privacy Policy <http://www.elsevier.com/privacypolicy>  
Elsevier Limited, The Boulevard, Langford Lane, Kidlington, Oxford, OX5 1GB, United Kingdom, Registration No. 1982084. This e-mail has been sent to you from Elsevier Ltd. To ensure delivery to your inbox (not bulk or junk folders), please add [article\\_status@elsevier.com](mailto:article_status@elsevier.com) to your address book or safe senders list.

Copyright (c) 2019 Elsevier Ltd.

[T-5c-20150917]

**Downloading this attachment is disabled.** If you want to download it and you trust this message, click "Looks safe" in the banner above.



- Compose
- Inbox** 384
- ★ Starred
- 🕒 Snoozed
- 📧 Sent
- 📧 Drafts 110

Proofs of [CSITE\_100566] Inbox x

**corrections.esch@elsevier.tnq.co.in** to me Nov 15, 2019, 3:26 PM

PLEASE DO NOT ALTER THE SUBJECT LINE OF THIS E-MAIL ON REPLY

Dear Dr. Martha Rianna,

Thank you for publishing with Case Studies in Thermal Engineering. We are pleased to inform you that the proof for your upcoming publication is ready for review via the link below. You will find instructions on the start page on how to make corrections directly on-screen or through PDF.

<https://elsevier.proofcentral.com/landing-page.html?token=6f04f3ff3fc0d17aa6b75f543fc649>

Please open this hyperlink using one of the following browser versions:

- Google Chrome 50+
- Mozilla Firefox 45+
- Mac OS Safari 10+

(Note: Microsoft Edge not supported at the moment)

We ask you to check that you are satisfied with the accuracy of the copy-editing, and with the completeness and correctness of the text, tables and figures. To assist you with this, copy-editing changes have been highlighted.

You can save and return to your article at any time during the correction process. Once you make corrections and hit the SUBMIT button you can no longer make further corrections. If you require co-authors to also review the proof, note that only one person may be working on the proof in the system at a time. Please make sure to only hit the SUBMIT button once all reviews are complete. When multiple authors are expected to make corrections, we recommend you to make use of the "Collaboration" feature.

We will do everything possible to get your article published quickly and accurately. The sooner we hear from you, the sooner your corrected article will be published online. You can expect your corrected proof to appear online within a week after we receive your corrections.

We very much look forward to your response.

Yours sincerely,

Elsevier

E-mail: [corrections.esch@elsevier.tnq.co.in](mailto:corrections.esch@elsevier.tnq.co.in)

For further assistance, please visit our customer support site at <http://support.elsevier.com>. Here you can search for solutions on a range of topics. You will also find our 24/7 support contact details should you need any further assistance from one of our customer support representatives.

Reply Forward



Compose

- Inbox 384
- Starred
- Snoozed
- Sent
- Drafts 110

### Corrections received - [CSITE\_100566] inbox x

**opteam@elsevierproofcentral.com** via amazonses.com Fri, Nov 15, 5:07 PM

This is an automatically generated message. Please do not reply because this mailbox is not monitored.

Dear Dr. Martha Rianna,

Thank you very much for using the Proof Central application for your article "The effect of carbon black composition in natural rubber compound" in the journal "CSITE"

All your corrections have been saved in our system. The PDF summary of your corrections, generated from Proof Central, can be downloaded from the following site for your reference:  
[https://s3.amazonaws.com/pvc3-elsevier-live/proofs/elsevier/CSITE/100566/CSITE\\_100566\\_edit\\_report.pdf](https://s3.amazonaws.com/pvc3-elsevier-live/proofs/elsevier/CSITE/100566/CSITE_100566_edit_report.pdf)

To track the status of your article throughout the publication process, please use our article tracking service:  
[http://authors.elsevier.com/TrackPaper.html?trk\\_article=CSITE100566&trk\\_surname=](http://authors.elsevier.com/TrackPaper.html?trk_article=CSITE100566&trk_surname=)

For help with article tracking:  
[http://support.elsevier.com/app/answers/detail/a\\_id/90](http://support.elsevier.com/app/answers/detail/a_id/90)

Kindly note that now we have received your corrections, your article is considered finalised and further amendments are no longer possible.

For further assistance, please visit our customer support site at <http://support.elsevier.com>. Here you can search for solutions on a range of topics. You will also find our 24/7 support contact details should you need any further assistance from one of our customer support representatives.

Yours sincerely,  
Elsevier Proof Central team

When you publish in an Elsevier journal your article is widely accessible. All Elsevier journal articles and book chapters are automatically added to Elsevier's SciVerse Science Direct which is used by 16 million researchers. This means that Elsevier helps your research get discovered and ensures that you have the greatest impact with your new article.

[www.sciencedirect.com](http://www.sciencedirect.com)

Reply Forward

# Published

mail.google.com/mail/u/0/#inbox/FMfcgXwG8mpL8HQclqLnMqhHhLgzLxWM

Apps Bertham Open = Pu... Guide for authors [...] Expo 2020 Volunte... Gmail YouTube Maps Google

Gmail Search mail

Compose

Inbox 384

Starred

Snoozed

Sent

Drafts 110

60 of 2,217

## Production has begun on your article [CSITE\_100566] in Case Studies in Thermal Engineering

A.Somasundaram@elsevier.com to me

Fri, Nov 15, 2:52 PM

Our reference: CSITE\_100566  
Article reference: CSITE\_2019\_402  
Article title: The effect of carbon black composition in natural rubber compound  
To be published in: Case Studies in Thermal Engineering

Dear Dr. Ginting,

Thank you for choosing to publish in Case Studies in Thermal Engineering. Please read this e-mail carefully as it contains important information.

**FINALIZE PUBLISHING YOUR ARTICLE:**

We work hard to publish our authors' articles online as quickly and efficiently as possible, therefore processing of your accepted manuscript for publication has already begun. To ensure that we publish your article in accordance with your wishes, please now complete the forms found here:

<http://authors.elsevier.com/authorforms/CSITE100566/100a74b0cef72457f22923d8b2199de8>

If this link does not work, please copy the entire URL (noting that it may run on to a second line in this message) into your browser. You should log in with your Elsevier Profile credentials, which you may have already created when submitting your article.

**CHECK YOUR CONTACT DETAILS:**

Please check that your details listed below are correct so we can contact you if needed:

Dr. Eva Marina Ginting  
Universitas Negeri Medan  
Department of physics  
Medan 20221  
Indonesia  
Phone: not available  
Fax: not available  
E-mail: [martharianna1@gmail.com](mailto:martharianna1@gmail.com)

**YOUR REFERENCE NUMBER:**

Lastly, to help us provide you with the best service, please make a note of your article's reference number CSITE\_100566 and quote it in all of your messages to us.

Thank you for your cooperation.

Kind regards,

A.Somasundaram  
Data Administrator  
Elsevier  
E-Mail: [A.Somasundaram@elsevier.com](mailto:A.Somasundaram@elsevier.com)

**HAVE QUESTIONS OR NEED ASSISTANCE?**

For further assistance, please visit our Customer Support site, where you can search for solutions on a range of topics, such as Open Access or payment queries, and find answers to frequently asked questions. You can also talk to our customer support team by phone 24 hours a day from Monday-Friday and 24/7 by live chat and email.

Get started here: <http://service.elsevier.com/app/home/supporthub/publishing>

Copyright © 2015 Elsevier B.V. | Privacy Policy <http://www.elsevier.com/privacypolicy>  
Elsevier Limited, The Boulevard, Langford Lane, Kidlington, Oxford, OX5 1GB, United Kingdom, Registration No. 1982084



Elsevier Ltd.  
The Boulevard  
Langford Lane  
Kidlington  
Oxford  
OX5 1GB  
United Kingdom  
t +44 1865 843000  
f +44 1865 843010  
elsevier.com

Empowering Knowledge™

Ref: CSITE\_2019\_402

Title: The effect of carbon black composition in natural rubber compound

Journal: Case Studies in Thermal Engineering

Dear Dr. Frida,

I am pleased to inform you that your paper has been accepted for publication. My own comments as well as any reviewer comments are appended to the end of this letter.

Your accepted manuscript will now be transferred to our production department. We will create a proof which you will be asked to check. You can read more about this [here](#). Meanwhile, you will be asked to complete a number of online forms required for publication. If we need additional information from you during the production process, we will contact.

Thank you for submitting your work to Case Studies in Thermal Engineering. We hope you consider us again for future submissions.

Kind regards,

Huihe Qiu  
Editor-in-Chief  
Case Studies in Thermal Engineering

**Comments from the editors and reviewers:**

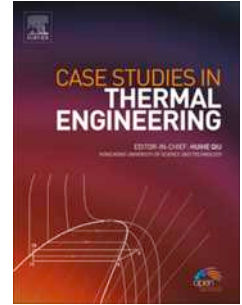
**- Reviewer 1**

- I would like to recommend this manuscript to be published in Case Studies in Thermal Engineering.

# Journal Pre-proof

The effect of carbon black composition in natural rubber compound

Eva Marlina Ginting, Nurdin Bukit, Erna Frida, Bunga Fisikanta Bukit



PII: S2214-157X(19)30406-X

DOI: <https://doi.org/10.1016/j.csite.2019.100566>

Reference: CSITE 100566

To appear in: *Case Studies in Thermal Engineering*

Received Date: 8 October 2019

Revised Date: 10 November 2019

Accepted Date: 12 November 2019

Please cite this article as: E.M. Ginting, N. Bukit, E. Frida, B.F. Bukit, The effect of carbon black composition in natural rubber compound, *Case Studies in Thermal Engineering* (2019), doi: <https://doi.org/10.1016/j.csite.2019.100566>.

This is a PDF file of an article that has undergone enhancements after acceptance, such as the addition of a cover page and metadata, and formatting for readability, but it is not yet the definitive version of record. This version will undergo additional copyediting, typesetting and review before it is published in its final form, but we are providing this version to give early visibility of the article. Please note that, during the production process, errors may be discovered which could affect the content, and all legal disclaimers that apply to the journal pertain.

© 2019 Published by Elsevier Ltd.

## The Effect Of Carbon Black Composition In Natural Rubber Compound

Erna Frida<sup>1</sup>, Nurdin Bukit<sup>2\*</sup>, Eva Marlina Ginting<sup>2</sup>, Bunga Fisikanta Bukit<sup>3</sup>

<sup>1</sup>Faculty of Engineering, Universitas Quality, 12345 Medan Indonesia

<sup>2</sup>Department of physics, Universitas Negeri Medan, 2022, Medan Indonesia

<sup>3</sup>Department of physics, Universitas Quality Berastagi, 22153 Berastagi Sumatera Utara Indonesia

corresponding author \* email: [nurdinbukit5@gmail.com](mailto:nurdinbukit5@gmail.com)

### ABSTRACT

This study aims to determine the effect of carbon black (CB) filler composition on natural rubber compounds on thermal properties, morphology, diffraction patterns, and functional groups. The method of making compound uses an open mill by mixing SIR 20 natural rubber as a binder and carbon black as a filler with a composition variation (0; 2; 4; 6 and 8)wt% . The diffraction pattern shows that there is a change from the shape of the amorphous structure to the semi-crystalline form with increasing CB composition. Morphological results showed that the mixture was homogeneous. FTIR graph shows that there is no significant difference between compound with filler and without filler. Differential scanning calorimetric analysis, the addition of carbon black composition to natural rubber increases the heat delta of the compound compared without CB.

**Keywords:** Natural Rubber, Carbon Black, Compound

### I. Introduction

Rubber is a crop that can produce a variety of products that are useful in life. Rubber technology continues to develop over time, and more products will come from the rubber industry. There are two types of rubber commonly used in industry, which are natural rubber and synthetic rubber. The use of natural rubber (NR) in various industries due to its elasticity, low hysteresis, high durability, excellent toughness. In general, NR is an amorphous material. However, when stretched NR can crystallize. This crystallization contributes to the mechanical properties of NR such as tensile strength, tear resistance, and abrasion resistance, etc.

The rubber compound is the main derivative of rubber commodity. Almost all rubber compounds use carbon black (CB) as a filler. Carbon black filler functions to strengthen, increase the volume, improve the physical properties of rubber, and strengthen vulcanization. The results of the rubber compound can be useful in making shoe soles, gloves, and motorized vehicle tires. Making rubber finished goods is done through the process of mixing rubber with chemicals compositions. Furthermore, milling is carried out at a temperature and time according to the type of rubber and its purpose. Compounding is done to get a homogeneous mixture between rubber and chemicals [1].

Carbon black is a carbon material close to pure form combustion products derived from hydrocarbon or biomass products. The causes of aggregate size in carbon black are combustion temperature, combustion time, and material. The manufacture of tire compounds with carbon

black as a filler aims to strengthen the bonds between compound-forming molecules. Carbon black as an active filler has a functional group that plays a role in strengthening the bonds between molecules forming rubber products. The structure of carbon black determines the optimal composition of the filler in a polymer matrix [2,3].

Carbon black is the type of filler most commonly used in making rubber compounds. Carbon black fillers have a strengthening effect on physical properties, especially those with small grain size [4,5,6]. The addition of carbon black will affect compound properties, viscosity, and strength of the compound. But the use of carbon black also has the disadvantage of reducing the stickiness. This makes carbon black not compact with other constituent materials at the time of mixing. Carbon black as an active filler can improve the performance of vulcanized rubber [7,8,9].

The natural rubber has limited properties. To increase the value of natural rubber modification is needed. One of the fillers is carbon black. Carbon black filler material is a filler material that can increase the hardness, tear resistance, abrasion resistance, and high breaking stress on the goods produced [10, 11,12]. NR/CB compounding system had been popularly used for tire treads (areas where the tire comes in contact with the road surface) on passenger vehicles up until approximately a decade ago[13]. Carbon black grafted (GCB) is prepared to strengthen NR. The result is mechanical properties NR increases because of better compatibility between GCB and NR[14]. The addition of carbon black fillers in a natural rubber/polypropylene (NR / PP) can increase the tensile properties, but there is a decrease in the elongation at break. The decrease is a consequence of the contribution of carbon black properties that have relatively no elastic. Adding a filler is a way to modify natural rubber. Besides CB, the oil palm boiler ash (OPBA) can also be useful as a filler in NR, where is OPBA in the form of nanoparticles [15,16].

There have been many studies that make rubber compounds with different comparison ratios [17,18,19]. This study made a natural rubber compound with a ratio of natural rubber/CB (phr) 100/0, 98/2, 96/4, 94/6, 92/8. Furthermore, the diffraction patterns, morphology, thermal properties, and functional groups of the compounds will be analyzed.

## **2.Experimental**

### *2.1 Material*

Indonesia Standard Natural Rubber Ruber -20 (SIR-20), zinc oxide (ZnO), stearic acid, Wax, Tetra Methyl Thiura Disulfaric (TMTD), Sulfur, Marcapto Benzhoathizole Disulfide (MBTS) carbon black (CB) (N330), ISO Propylamino Diphenylamine (IPPD).

### *2.2 Rubber Compound Preparation*

SIR-20 natural rubber, zinc oxide (ZnO), stearic acid, Wax, IPPD, TMTD, MBTS are fed into the open mill machine as shown in Fig.1a, then ground until the rubber is solid. As the rubber milling process progresses, the materials are added one by one in stages, with a rubber compound formulation as shown in Table 1. The compound sheet vulcanization process was carried out at 160°C for 15 minutes and a pressure of 135 MPa. Fig.1b shows the compound results.

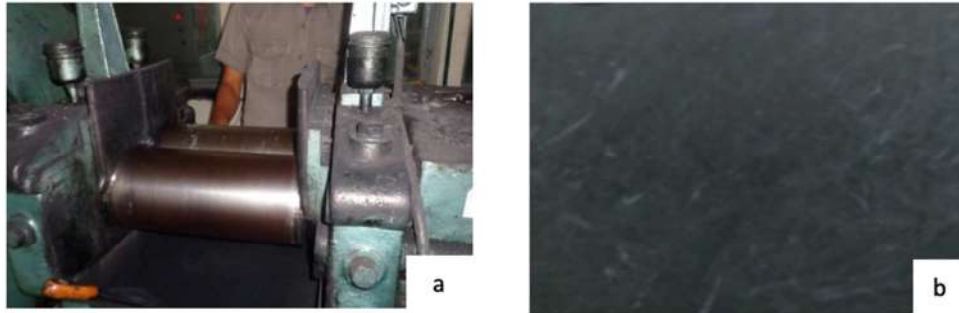


Fig .1. (a) The grinding process in the roll mill, (b)Natural rubber compound

**Table 1.**

Composition of compounds with CB fillers.

No	Materials	S <sub>0</sub> (without filler)	S <sub>1</sub> (2wt%)	S <sub>2</sub> (4wt%)	S <sub>3</sub> (6wt%)	S <sub>4</sub> (8wt%)	Function
1	NR SIR-20	100	98	96	94	92	Binder
2	Wax	1.5	1.5	1.5	1.5	1.5	Antilux
3	Filler (CB)	0	2	4	6	8	Filler
4	ZnO	5	5	5	5	5	Activator
5	Stearic Acid	2	2	2	2	2	Activator
6	Sulfur	3	3	3	3	3	Curing agent
7	IPPD	2	2	2	2	2	Antioxidant
8	TMTD	1.5	1.5	1.5	1.5	1.5	Accelerator
9	MBTS	2.5	2.5	2.5	2.5	2.5	Accelerator

### 3. Result And Discussion



### 3.1 X-Ray Diffraction (XRD) Analysis

XRD testing was carried out to obtain diffraction patterns and crystalline structures. The XRD used was Shimadzu 6100 (40 kV, 30 mA) with a wavelength of  $\text{Cu-K}_{\alpha 1} = 1.5405 \text{ \AA} = 0.15406 \text{ nm}$ , at a rate of  $2^\circ / \text{min}$  in the angular range of  $2\Theta = 5^\circ - 70^\circ$ . Figure 2 shows the XRD diffraction pattern for natural rubber compounds with the addition of carbon black into the matrix polymer. The decrease in intensity was at  $d_{\text{hkl}} 22^\circ$  at CB composition 2% wt and 4% wt. In the CB composition, 6% wt and 8% wt weight intensity disappears. This shows the change in structure from amorphous to crystal. This change shows that there is intercalation between natural rubber polymers and CB. With the increase of CB in natural rubber compounds, the  $\text{Fe}_3\text{O}_4$  content was seen to increase in  $d_{\text{hkl}} 440$ . Likewise, the addition of CB with carbon intensity at  $d_{\text{hkl}} 101$  angles  $2\theta = 45^\circ$ . It can change the amorphous phase to the crystal phase as a consequence of molecular diffusion during treatment [20].

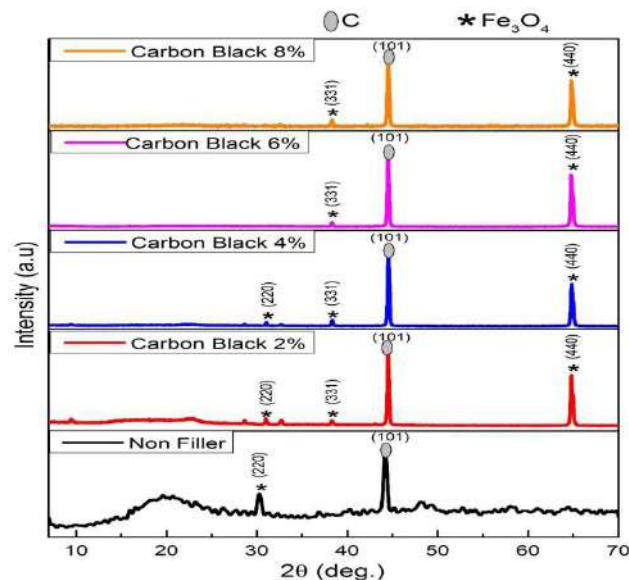


Fig 2. Diffraction Patterns of natural rubber compound without filler and with CB filler

### 3.2 Scanning Electron Microscopy (SEM) Analysis of Natural rubber compound with CB filler

Scanning Electron Microscopy (SEM) characterization on rubber was carried out to determine the distribution of carbon black fillers that affect the nature of natural rubber. SEM characterization results in Fig.3 show the distribution of CB fillers in the composition 0, 2, 4, 6, and 8 wt% . The spread of filler occurs evenly. This is because of the interaction between the filler and rubber. Thus, increasing the mechanical properties of the rubber. Empty cavities arise due to the tendency of CB to form agglomeration because silica in CB has hydroxyl groups, which will help hydrogen bond with silica molecules or other polar chemical materials. This is consistent with the diffraction pattern of the XRD results in Fig 2. Fig. 3a to 3d show no de-adhesion phenomena occurring at the interface of the natural rubber matrix and fillers as found by [21] in natural-chitin rubber composites as the number of filler increases.

SEM analysis is a supporter of XRD analysis. The results of SEM analysis indicate the presence of  $\text{SiO}_2$  morphology, which acts as an amplifier. The characterization of XRD and SEM shows that the majority of the amplifier used is amorphous. The presence of hump informs of the

amorphous phase content of the sample [22]. The crystal will have a significant effect on the chemical elements of the sample. Generally, the higher the crystallinity, the lower the solubility of the elements [23]. From SEM observations, the surface of NR / CB20 shows homogeneous CB dispersion in the NR matrix. The presence of CB increases agglomeration to produce low tensile strength[24].

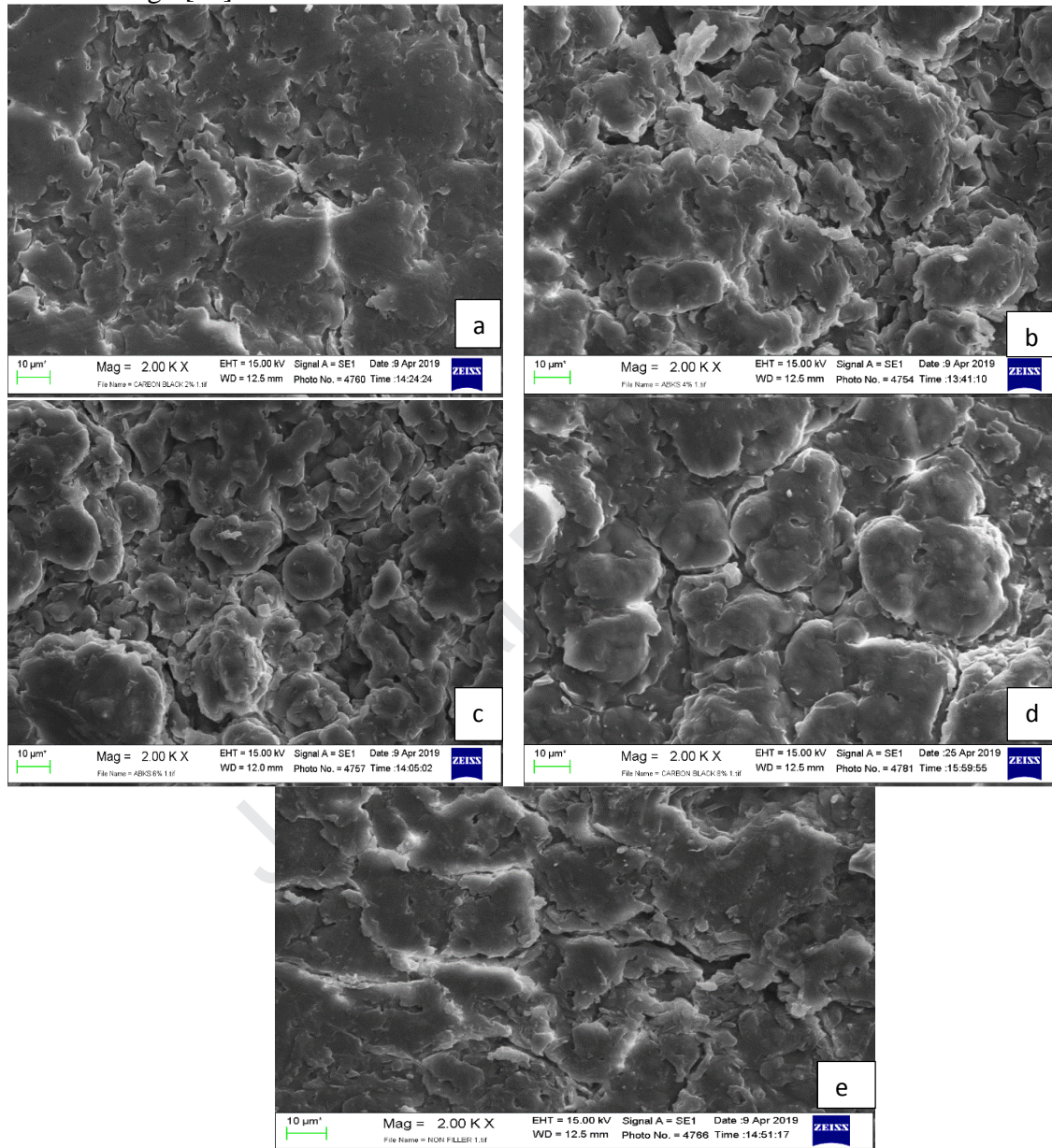


Fig 3. Morphology of natural rubber compound with Filler CB (a) 2wt%, (b) 4 wt%, (c) 6 wt%, (d) 8 wt%, (e) non filler

### 3.3 Analysis of Differential Scanning Calorimetric (DSC)

From Figure 4, we can see the melting point from the onset temperature of 338<sup>0</sup> C to the endset temperature of 384<sup>0</sup> C. The change in peak temperature is not significant from the

composition of the CB fillers 2 wt% to 8 wt% from temperatures 366.25 C to temperatures 370.78 C. However, a decrease in Heat occurs with increasing CB content from 403.38 to 360.68 mJ. The results from the DSC analysis are useful for determining enthalpy by measuring the differential heat flow needed to keep the sample and the inert reference at the same temperature. The information obtained in the semi-crystalline polymer is the material's crystallinity content [25]. The Melting temperature is an important parameter for thermoplastics because it represents the minimum temperature required for polymer processing. The melting behavior is highly dependent on the chemical structure of the material along with the size and regularity of crystallization found in the crystalline phase [26].

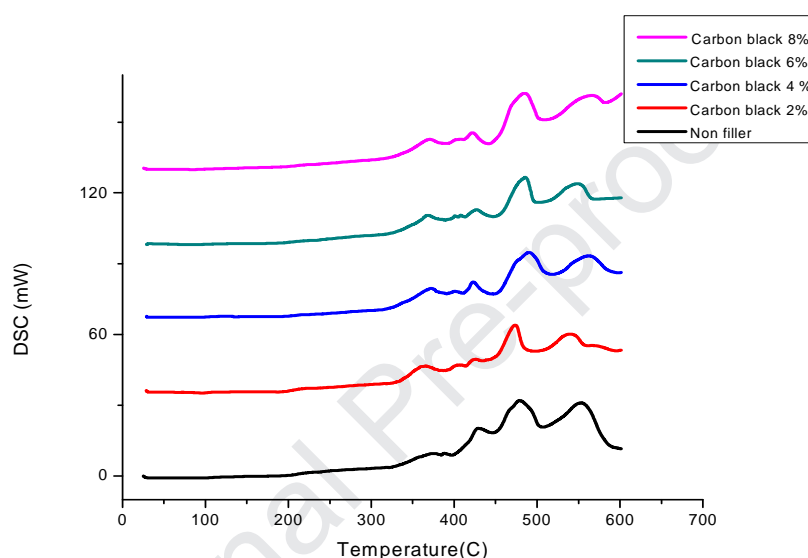


Fig .4. DSC Thermogram of natural rubber compound with CB filler (0-8) wt%

**Table 2.**

Melting point of natural rubber compound with CB filler

Sample (wt%)	Onset (C)	Tm Peak (C)	Endset (C)	Heat Area (mJ)	Heat Delta (J/g)
0	370.44	374.44	384.14	65.29	8.37
2	338.82	366.25	384.03	403.28	51.70
4	342.15	372.05	381.34	482.11	63.44
6	356.81	367.67	381.70	372.05	45.93
8	340.97	370.78	380.48	360.68	48.09

### 3.4 Analysis of Fourier Transform Infrared (FTIR)

The results of FTIR characterization on nanocomposite samples with Carbon Black fillers indicate the existence of several vibrational bonds. C-H bonds found in carbon absorbed in the area of 2853 - 2962  $\text{cm}^{-1}$ . Peak 1475 - 1300 also shows C-H bending. Whereas the peak 1000-650 shows C = C-H bending [22]. For natural rubber, the stretching characteristics of C-H attached to the double bond C = C are at the absorption peak of 835  $\text{cm}^{-1}$ , and the stretching characteristics of the alkene (C = C) are at the absorption peak of 1659  $\text{cm}^{-1}$ .

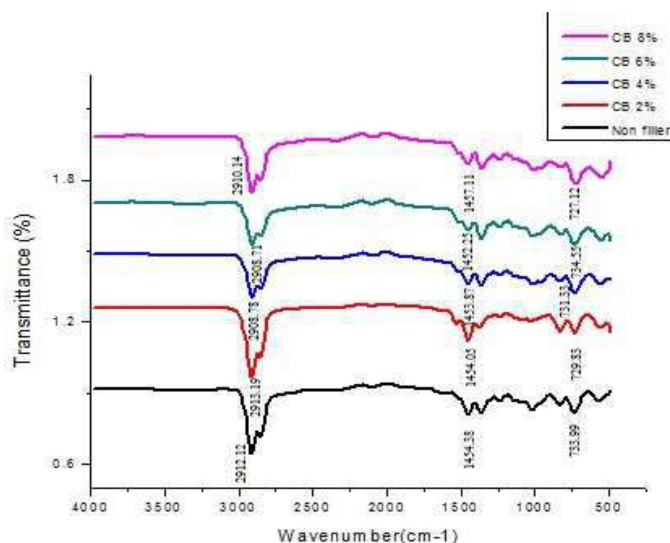


Fig 5. FTIR Spectra of natural rubber compound with CB filler combined (0 - 8)wt % .

FTIR spectra between nanocomposites with the addition of CB fillers and without fillers showed no significant difference. This was probably because CB fillers were spread evenly on the rubber compound and also possibly due to the number of fillers that were not large enough to affect the bond on natural rubber.

#### 4. Conclusions

The XRD analysis results showed a change in the structure of the sample from amorphous to the crystal structure. SEM characterization shows an even CB filler. The change in peak temperature is not significant from the composition of the CB filterers 2wt% to 8wt% from temperatures 366,25 C to temperatures 370,78 C. However, a decrease in Heat occurs with increasing CB content from 403.38 to 360.68 mJ. FTIR spectra between nanocomposites with the addition of CB fillers and without fillers showed no significant difference. This was probably because CB fillers were spread evenly on the rubber compound and also possibly due to the number of fillers that were not large enough to affect the bond on natural rubber.

#### Acknowledgements

The author would like to thank for The Based Research 2019 funding with Contract Number: 41 / UN33.8 / PL-DRPM / 2019, from the Directorate of Research and Community Service, Directorate General of Research and Development Strengthening, Ministry of Research, Technology and Higher Education of the Republic of Indonesia.

#### References

- [1] Maryanti, Febrina Delvitasari and Winarto, *Jurnal Dinamika Penelitian Industri* **29** (1):29-34,(2018).
- [2] Balberg, I. (2002). *Carbon*. **40**: 139-143.(2002).
- [3] Li, Z. H., Zhang, J., dan Chen, S.J, *Express Polymer Letters*. **2**(10): 695–704,(2008).
- [4] Boonstra BB, *Rubber Age*. **92** (6): 227-235,(2005).



- [5] Marlina.P, Pratama.F, Hamzah.B, Pambayun.R, Jurnal Teknologi Industri Pertanian **25** (1):85-93,(2015).
- [6] Omofuma, F.E, Adeniye, S.A, and Adeleke, AE. World Appl. Sci. J., **14**(9) : 1347-1352,(2011).
- [7] Rattanasom, N., Saowapark, T., dan Deeprasertkul, C. Polymer Testing. **26**(3): 369-377,(2007).
- [8] Nukaga, H., Fujinami, S., Watanabe, H., Nakajima, K., dan Nishi, T,International Polymer Science and Technology. **34**(4): 509-515.(2006).
- [9] Omnes, B., Thuillier, S., Pilvin, P., Grohens, Y., dan Gillet, S., Composite Part A. Applied Science and Manufacturing. **39**(7): 1141-1149.(2008).
- [10] Ramin, Z., dan Gangali, S.T., Ghoreishy, M.H.R., dan Davallu, M.. Journal of Chemistry. **9**(3): 1102-1112.(2012).
- [11] E.M Ginting,N.Bukit, Muliani and E .Frida,IOP Conf. Series: Materials Science and Engineering **223** (2017) .
- [12] Noor.Z,Nasaruddin.MN,Bukit,N, Susilawati ,Juwairiah ,Ikhwanudin, Journal of Physics: Conf. Series **1120** (2018) .
- [13] Yasuo Uekita ,Yousuke Watanabe, Hironobu Iyama,Orhan Ozturk, Energy & Functional Materials Research Laboratory, Sumitomo Chemical Co., Ltd, (2016).
- [14] Wen Fu,Li Wang, Jianning Huang,Cuiwen Liu,Wenlong Peng,Haotuo Xiao,Shenglin Li, Mechanical Properties and Mullins Effect in Natural Rubber Reinforced by Grafted Carbon Black,Advances in Polymer Technology, Article ID 4523696 Hindawi ,2019
- [15] Bukit.N, Ginting E M, Pardede I.S, Frida E, Bukit B.F, IOP Conf. Series: Journal of Physics: Conf. Series 1120 (2018), doi:10.1088/1742-6596/1120/1/012003
- [16] Bukit.N, Ginting. E. M, Hutagalung E.A,Sidebang.E, Frida. E, Bukit. B.F, Rev. Adv. Mater. Sci. 2019; 58:195–200
- [17] Nuyah, Rahmaniar.Jurnal dinamika penelitian industry, **24**(2):114-121,(2013)
- [18] Sidebang .E,Bukit.N, Jurnal Einstein,**6**(2) , 45-5,(2018).
- [19] Nasution,.Z.Al., Limbong. H.P , Jurnal Riset Teknologi Industry, **11**(1);66-75 ,(2017).
- [20] Bukit.N, Frida.E., Makara Journal of Technology,**7**(3), 113-130.(2013)
- [21] Santulli. C, Puglia .D, Rallini. M, Visakh.P.M, Kenny. J.M, and Thomas, S., Malaysian Polymer Journal, **9** (1): 18-23,(2014).
- [22] Ginting.E.M, Bukit.N, Motlan, Gultom.D, Frida.E,Bukit .B.F, International Journal of Civil Engineering and Technology 10(6). 453-464,(2019).
- [23] Hildayati; Triwikantoro; Faisal, H. and Sudirman, Seminar Nasional Pascasarjana IX –ITS, 2009, Surabaya
- [24] S Savetlana, Zuhendri, I Sukmana and F A Saputra, IOP Conf. Series: Materials Science and Engineering, 2236(2017)
- [25] Choucihary, N.R. Chaki, T.K., Dutta, A. and Bhowmick, A.K. Polymer. **30**: 2047-2053 (1989).
- [26] Sichina, WJ. (1994). "Prediction of End-use characteristics of Polyethylene Materials Using Differential Scanning Calorimetry". USA: Application Briff DSC-11.

**Conflict Interest**

I, Nurdin Bukit, confirmed that have not conflict of interest with all authors of our article.

*Signature :*



*Name : Nurdin Bukit*

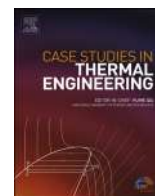
*Date : 10 November 2019*

Journal Pre-proof



Contents lists available at ScienceDirect

## Case Studies in Thermal Engineering

journal homepage: <http://www.elsevier.com/locate/csited>

## The effect of carbon black composition in natural rubber compound

Erna Farida<sup>b</sup>, Nurdin Bukit<sup>a,\*</sup>, Eva Marlina Ginting<sup>a</sup>, Bunga Fisikanta Bukit<sup>c</sup><sup>a</sup> Department of Physics, Universitas Negeri Medan, 20221, Medan, Indonesia<sup>b</sup> Faculty of Engineering, Universitas Quality, 12345, Medan, Indonesia<sup>c</sup> Department of Physics, Universitas Quality Berastagi, 22153, Berastagi, Sumatera Utara, Indonesia

## ARTICLE INFO

## Keywords:

Natural rubber  
Carbon black  
Compound

## ABSTRACT

This study aims to determine the effect of carbon black (CB) filler composition on natural rubber compounds on thermal properties, morphology, diffraction patterns, and functional groups. The method of making compound uses an open mill by mixing SIR 20 natural rubber as a binder and carbon black as a filler with a composition variation (0; 2; 4; 6 and 8)wt%. The diffraction pattern shows that there is a change from the shape of the amorphous structure to the semi-crystalline form with increasing CB composition. Morphological results showed that the mixture was homogeneous. FTIR graph shows that there is no significant difference between compound with filler and without filler. Differential scanning calorimetric analysis, the addition of carbon black composition to natural rubber increases the heat delta of the compound compared without CB.

### 1. Introduction

Rubber is a crop that can produce a variety of products that are useful in life. Rubber technology continues to develop over time, and more products will come from the rubber industry. There are two types of rubber commonly used in industry, which are natural rubber and synthetic rubber. The use of natural rubber (NR) in various industries due to its elasticity, low hysteresis, high durability, excellent toughness. In general, NR is an amorphous material. However, when stretched NR can crystallize. This crystallization contributes to the mechanical properties of NR such as tensile strength, tear resistance, and abrasion resistance, etc.

The rubber compound is the main derivative of rubber commodity. Almost all rubber compounds use carbon black (CB) as a filler. Carbon black filler functions to strengthen, increase the volume, improve the physical properties of rubber, and strengthen vulcanization. The results of the rubber compound can be useful in making shoe soles, gloves, and motorized vehicle tires. Making rubber finished goods is done through the process of mixing rubber with chemicals compositions. Furthermore, milling is carried out at a temperature and time according to the type of rubber and its purpose. Compounding is done to get a homogeneous mixture between rubber and chemicals [1].

Carbon black is a carbon material close to pure form combustion products derived from hydrocarbon or biomass products. The causes of aggregate size in carbon black are combustion temperature, combustion time, and material. The manufacture of tire compounds with carbon black as a filler aims to strengthen the bonds between compound-forming molecules. Carbon black as an active filler has a functional group that plays a role in strengthening the bonds between molecules forming rubber products. The structure of

\* Corresponding author.

E-mail address: [nurdinbukit5@gmail.com](mailto:nurdinbukit5@gmail.com) (N. Bukit).<https://doi.org/10.1016/j.csited.2019.100566>

Received 8 October 2019; Received in revised form 10 November 2019; Accepted 12 November 2019

Available online 15 November 2019

2214-157X/© 2019 The Authors. Published by Elsevier Ltd. This is an open access article under the CC BY-NC-ND license

[\(http://creativecommons.org/licenses/by-nc-nd/4.0/\)](http://creativecommons.org/licenses/by-nc-nd/4.0/).



carbon black determines the optimal composition of the filler in a polymer matrix [2,3].

Carbon black is the type of filler most commonly used in making rubber compounds. Carbon black fillers have a strengthening effect on physical properties, especially those with small grain size [4–6]. The addition of carbon black will affect compound properties, viscosity, and strength of the compound. But the use of carbon black also has the disadvantage of reducing the stickiness. This makes carbon black not compact with other constituent materials at the time of mixing. Carbon black as an active filler can improve the performance of vulcanized rubber [7–9].

The natural rubber has limited properties. To increase the value of natural rubber modification is needed. One of the fillers is carbon black. Carbon black filler material is a filler material that can increase the hardness, tear resistance, abrasion resistance, and high breaking stress on the goods produced [10–12]. NR/CB compounding system had been popularly used for tire treads (areas where the tire comes in contact with the road surface) on passenger vehicles up until approximately a decade ago [13]. Carbon black grafted (GCB) is prepared to strengthen NR. The result is mechanical properties NR increases because of better compatibility between GCB and NR [14]. The addition of carbon black fillers in a natural rubber/polypropylene (NR/PP) can increase the tensile properties, but there is a decrease in the elongation at break. The decrease is a consequence of the contribution of carbon black properties that have relatively no elastic. Adding a filler is a way to modify natural rubber. Besides CB, the oil palm boiler ash (OPBA) can also be useful as a filler in NR, where is OPBA in the form of nanoparticles [15,16].

There have been many studies that make rubber compounds with different comparison ratios [17–19]. This study made a natural rubber compound with a ratio of natural rubber/CB (phr) 100/0, 98/2, 96/4, 94/6, 92/8. Furthermore, the diffraction patterns, morphology, thermal properties, and functional groups of the compounds will be analyzed.

## 2. Experimental

### 2.1. Material

Indonesia Standard Natural Rubber Ruber –20 (SIR-20), zinc oxide (ZnO), stearic acid, Wax, Tetra Methyl Thiura Disulfaric (TMTD), Sulfur, Marcapto Benzhoathizole Disulfide (MBTS) carbon black (CB) (N330), ISO Propylamino Diphenylamine (IPPD).

### 2.2. Rubber compound preparation

SIR-20 natural rubber, zinc oxide (ZnO), stearic acid, Wax, IPPD, TMTD, MBTS are fed into the open mill machine as shown in Fig. 1a, then ground until the rubber is solid. As the rubber milling process progresses, the materials are added one by one in stages, with a rubber compound formulation as shown in Table 1. The compound sheet vulcanization process was carried out at 160 °C for 15 min and a pressure of 135 MPa. Fig. 1b shows the compound results (see Table 2).

## 3. Result and discussion

### 3.1. X-ray diffraction (XRD) analysis

XRD testing was carried out to obtain diffraction patterns and crystalline structures. The XRD used was Shimadzu 6100 (40 kV, 30 mA) with a wavelength of  $\text{Cu-K}_{\alpha 1} = 1.5405 \text{ \AA} = 0.15406 \text{ nm}$ , at a rate of  $2^\circ/\text{min}$  in the angular range of  $2\Theta = 5^\circ - 70^\circ$ . Fig. 2 shows the XRD diffraction pattern for natural rubber compounds with the addition of carbon black into the matrix polymer. The decrease in intensity was at  $d_{\text{hkl}} 22^0$  at CB composition 2% wt and 4% wt. In the CB composition, 6% wt and 8% wt weight intensity disappears. This shows the change in structure from amorphous to crystal. This change shows that there is intercalation between natural rubber polymers and CB. With the increase of CB in natural rubber compounds, the  $\text{Fe}_3\text{O}_4$  content was seen to increase in  $d_{\text{hkl}} 440$ . Likewise, the addition of CB with carbon intensity at  $d_{\text{hkl}} 101$  angles  $2\Theta = 45^\circ$ . It can change the amorphous phase to the crystal phase as a consequence of molecular diffusion during treatment [20].

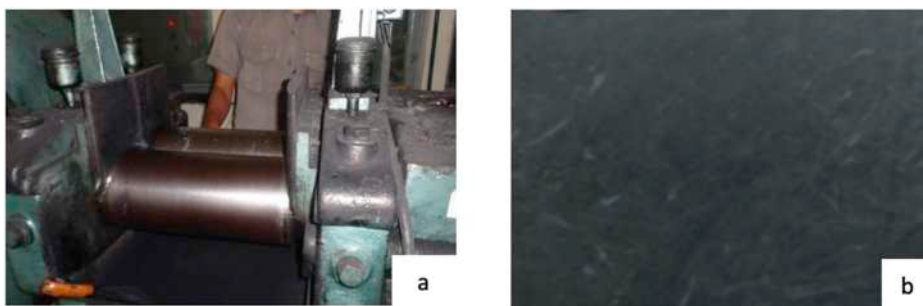


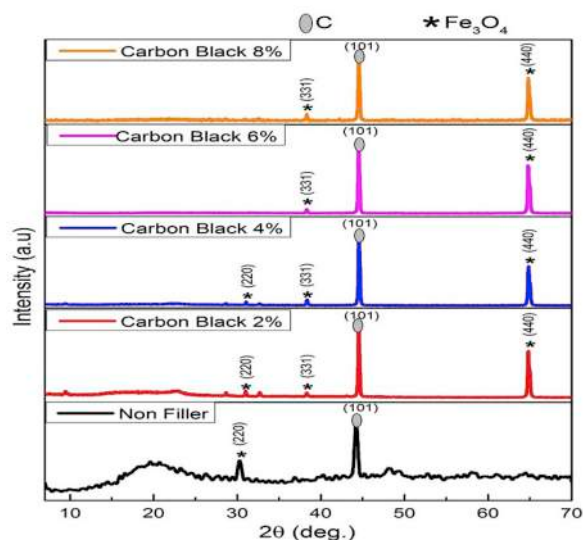
Fig. 1. (a) The grinding process in the roll mill, (b) Natural rubber compound.

**Table 1**  
Composition of compounds with CB fillers.

No	Materials	S <sub>0</sub> (without filler)	S <sub>1</sub> (2 wt%)	S <sub>2</sub> (4 wt%)	S <sub>3</sub> (6 wt%)	S <sub>4</sub> (8 wt%)	Function
1	NR SIR-20	100	98	96	94	92	Binder
2	Wax	1.5	1.5	1.5	1.5	1.5	Antilux
3	Filler (CB)	0	2	4	6	8	Filler
4	ZnO	5	5	5	5	5	Activator
5	Stearic Acid	2	2	2	2	2	Activator
6	Sulfur	3	3	3	3	3	Curing agent
7	IPPD	2	2	2	2	2	Antioxidant
8	TMTD	1.5	1.5	1.5	1.5	1.5	Accelerator
9	MBTS	2.5	2.5	2.5	2.5	2.5	Accelerator

**Table 2**  
Melting point of natural rubber compound with CB filler.

Sample(wt%)	Onset(C)	Tm Peak (C)	Endset(C)	Heat Area(mJ)	Heat Delta (J/g)
0	370.44	374.44	384.14	65.29	8.37
2	338.82	366.25	384.03	403.28	51.70
4	342.15	372.05	381.34	482.11	63.44
6	356.81	367.67	381.70	372.05	45.93
8	340.97	370.78	380.48	360.68	48.09



**Fig. 2.** Diffraction Patterns of natural rubber compound without filter and with CB filler.

### 3.2. Scanning Electron Microscopy (SEM) analysis of natural rubber compound with CB filler

Scanning Electron Microscopy (SEM) characterization on rubber was carried out to determine the distribution of carbon black fillers that affect the nature of natural rubber. SEM characterization results in Fig. 3 show the distribution of CB fillers in the composition 0, 2, 4, 6, and 8 wt%. The spread of filler occurs evenly. This is because of the interaction between the filler and rubber. Thus, increasing the mechanical properties of the rubber. Empty cavities arise due to the tendency of CB to form agglomeration because silica in CB has hydroxyl groups, which will help hydrogen bond with silica molecules or other polar chemical materials. This is consistent with the diffraction pattern of the XRD results in Fig. 2. Fig. 3a to d shows no de-adhesion phenomena occurring at the interface of the natural rubber matrix and fillers as found by Ref. [21] in natural-chitin rubber composites as the number of filler increases.

SEM analysis is a supporter of XRD analysis. The results of SEM analysis indicate the presence of SiO<sub>2</sub> morphology, which acts as an amplifier. The characterization of XRD and SEM shows that the majority of the amplifier used is amorphous. The presence of hump informs of the amorphous phase content of the sample [22]. The crystal will have a significant effect on the chemical elements of the sample. Generally, the higher the crystallinity, the lower the solubility of the elements [23]. From SEM observations, the surface of NR/CB20 shows homogeneous CB dispersion in the NR matrix. The presence of CB increases agglomeration to produce low tensile

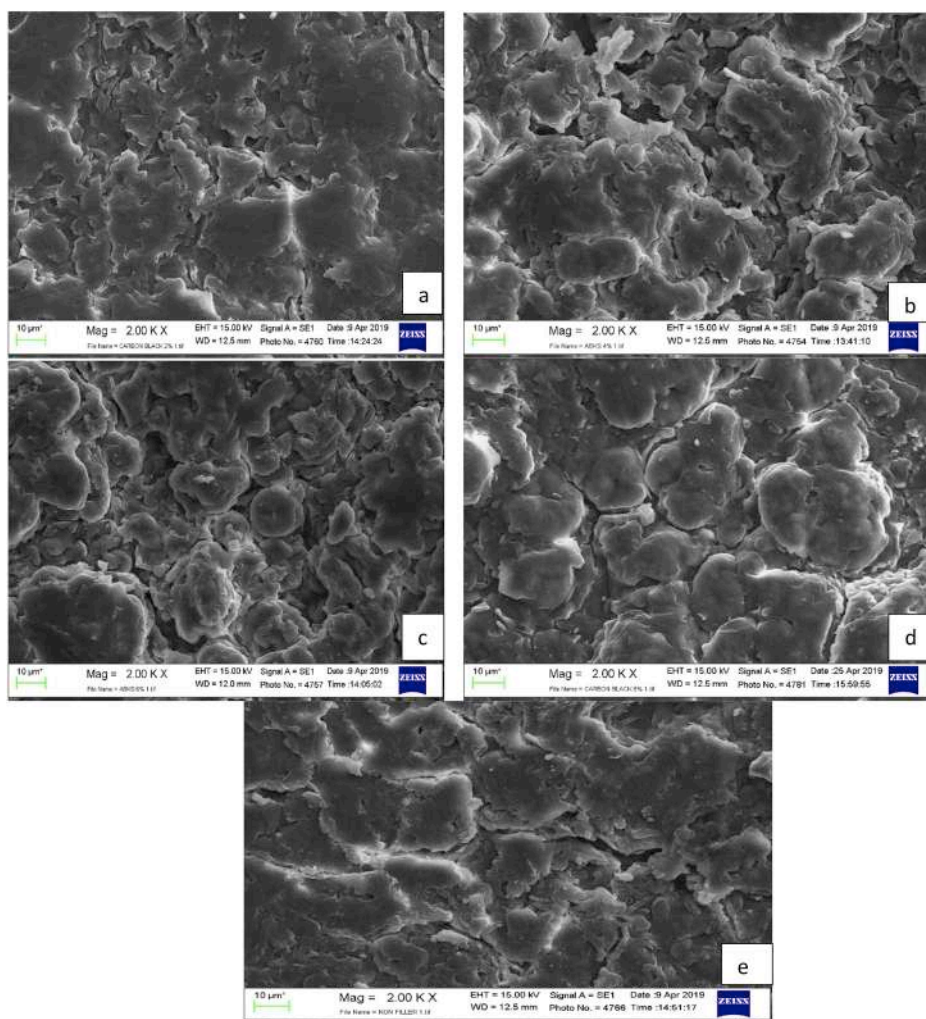


Fig. 3. Morphology of natural rubber compound with Filler CB (a) 2 wt%, (b) 4 wt%, (c) 6 wt%, (d) 8 wt%, (e) non filler.

strength [24].

### 3.3. Analysis of differential scanning calorimetric (DSC)

From Fig. 4, we can see the melting point from the onset temperature of 338 °C to the endset temperature of 384 °C. The change in peak temperature is not significant from the composition of the CB fillers 2 wt% to 8 wt% from temperatures 366.25C to temperatures 370.78C. However, a decrease in Heat occurs with increasing CB content from 403.38 to 360.68 mJ. The results from the DSC analysis are useful for determining enthalpy by measuring the differential heat flow needed to keep the sample and the inert reference at the same temperature. The information obtained in the semi-crystalline polymer is the material's crystallinity content [25]. The Melting temperature is an important parameter for thermoplastics because it represents the minimum temperature required for polymer processing. The melting behavior is highly dependent on the chemical structure of the material along with the size and regularity of crystallization found in the crystalline phase [26] (see Fig. 5).

### 3.4. Analysis of fourier transform infrared (FTIR)

The results of FTIR characterization on nanocomposite samples with Carbon Black fillers indicate the existence of several vibrational bonds. C–H bonds found in carbon absorbed in the area of 2853–2962  $\text{cm}^{-1}$ . Peak 1475–1300 also shows C–H bending. Whereas the peak 1000–650 shows C = C–H bending [22]. For natural rubber, the stretching characteristics of C–H attached to the double bond C = C are at the absorption peak of 835  $\text{cm}^{-1}$ , and the stretching characteristics of the alkene (C = C) are at the absorption peak of 1659  $\text{cm}^{-1}$ .

FTIR spectra between nanocomposites with the addition of CB fillers and without fillers showed no significant difference. This was

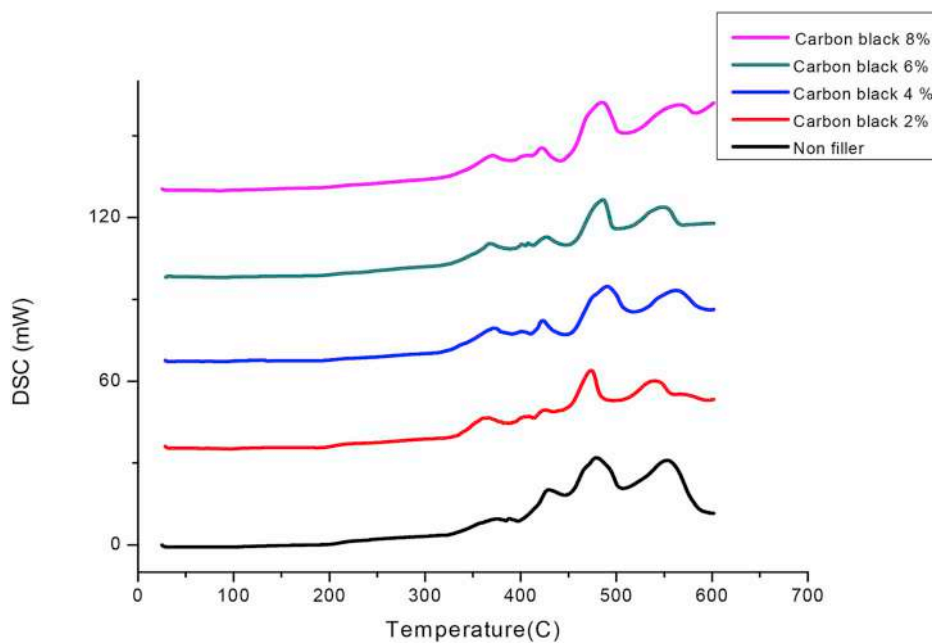


Fig. 4. DSC Thermogram of natural rubber compound with CB filler (0–8) wt%.

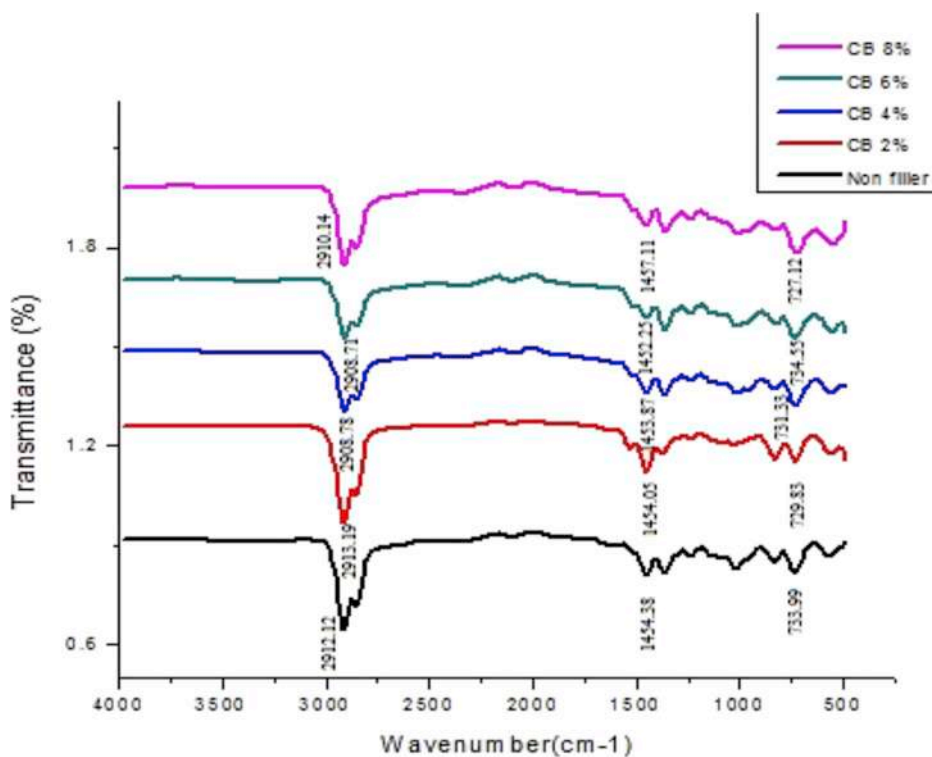


Fig. 5. FTIR Spectra of natural rubber compound with CB filler combined (0–8)wt %.

probably because CB fillers were spread evenly on the rubber compound and also possibly due to the number of fillers that were not large enough to affect the bond on natural rubber.

#### 4. Conclusions

The XRD analysis results showed a change in the structure of the sample from amorphous to the crystal structure. SEM characterization shows an even CB filler. The change in peak temperature is not significant from the composition of the CB fillers 2 wt% to 8 wt% from temperatures 366,25C to temperatures 370,78C. However, a decrease in Heat occurs with increasing CB content from 403.38 to 360.68 mJ. FTIR spectra between nanocomposites with the addition of CB fillers and without fillers showed no significant difference. This was probably because CB fillers were spread evenly on the rubber compound and also possibly due to the number of fillers that were not large enough to affect the bond on natural rubber.

#### Declaration of competing interest

Authors confirmed that have not conflict of interest in our article.

#### Acknowledgements

The author would like to thank for The Based Research 2019 funding with Contract Number: 41/UN33.8/PL-DRPM/2019, from the Directorate of Research and Community Service, Directorate General of Research and Development Strengthening, Ministry of Research, Technology and Higher Education of the Republic of Indonesia.

#### References

- [1] Febrina Delvitasari Maryanti, Winarto, J. Din. *Penelit. Ind.* 29 (1) (2018) 29–34.
- [2] I. Balberg, *Carbon* 40 (2002) 139–143, 2002.
- [3] Z.H. Li, J. Zhang, S.J. dan Chen, *Express Polym. Lett.* 2 (10) (2008) 695–704.
- [4] B.B. Boonstra, *Rubber Age* 92 (6) (2005) 227–235.
- [5] P. Marlina, F. Pratama, B. Hamzah, R. Pambayun, *J. Teknol. Ind. Pertan.* 25 (1) (2015) 85–93.
- [6] F.E. Omofuma, S.A. Adeniyi, A.E. Adeleke, *World Appl. Sci. J.* 14 (9) (2011) 1347–1352.
- [7] N. Rattanasom, T. Saowapark, C. dan Deeprasertkul, *Polym. Test.* 26 (3) (2007) 369–377.
- [8] H. Nukaga, S. Fujinami, H. Watanabe, K. Nakajima, T. Dan Nishi, *Int. Polym. Sci. Technol.* 34 (4) (2006) 509–515.
- [9] B. Omnes, S. Thuillier, P. Pilvin, Y. Grohens, S. dan Gillet, *Compos. Appl. Sci. Manuf.* 39 (7) (2008) 1141–1149.
- [10] Z. Ramin, S.T. dan Gangali, M.H.R. Ghoreishy, M. dan Davallu, *J. Chem.* 9 (3) (2012) 1102–1112.
- [11] E. M Ginting, N. Bukit, Muliani, E. Frida, *IOP Conf. Ser. Mater. Sci. Eng.* 223 (2017).
- [12] Z. Noor, M.N. Nasaruddin, N. Bukit, Susilawati, Juwairiah, Ikhwanudin, *J. Phys. Conf. Ser.* 1120 (2018).
- [13] Uekita Yasuo, Yousuke Watanabe, Hironobu Iyama, Orhan Ozturk, Energy & Functional Materials Research Laboratory, Sumitomo Chemical Co., Ltd, 2016.
- [14] W. Fu, L. Wang, J. Huang, C. Liu, W. Peng, H. Xiao, S. Li, Mechanical properties and Mullins effect in natural rubber reinforced by grafted carbon black, *Adv. Polym. Technol.* 11 (2019). Article ID 4523696 Hindawi.
- [15] N. Bukit, E.M. Ginting, I.S. Pardede, E. Frida, B.F. Bukit, *IOP Conf. Ser.: J. Phys. Conf. Ser.* 1120 (2018), <https://doi.org/10.1088/1742-6596/1120/1/012003>.
- [16] N. Bukit, E.M. Ginting, E.A. Hutagalung, E. Sidebang, E. Frida, B.F. Bukit, *Rev. Adv. Mater. Sci.* 58 (2019) 195–200.
- [17] Rahmiani Nuyah, *J. Din. Penelit. Ind.* 24 (2) (2013) 114–121.
- [18] E. Sidebang, N. Bukit, *J. Einstein* 6 (2) (2018), 45-5.
- [19] Z.Ai Nasution, H.P. Limbong, *J. Ris. Teknol. Ind.* 11 (1) (2017) 66–75.
- [20] N. Bukit, E. Frida, Makara, *J. Technol.* 7 (3) (2013) 113–130.
- [21] C. Santulli, D. Puglia, M. Rallini, P.M. Visakh, J.M. Kenny, S. Thomas, *Malays. Polym. J.* 9 (1) (2014) 18–23.
- [22] E.M. Ginting, N. Bukit, Motlan, D. Gultom, E. Frida, B.F. Bukit, *Int. J. Civ. Eng. Technol.* 10 (6) (2019) 453–464.
- [23] Hildayati; Triwikantoro; Faisal, H. and Sudirman, Seminar Nasional Pascasarjana IX –ITS, 2009, Surabaya.
- [24] S. Savetlana, I Sukmana Zulhendri, F.A. Saputra, *IOP Conf. Ser. Mater. Sci. Eng.* (2017) 2236.
- [25] N.R. Chouchary, T.K. Chaki, A. Dutta, A.K. Bhowmick, *Polymer* 30 (1989) 2047–2053.
- [26] W.J. Sichina, Prediction of End-Use Characteristics of Polyethylene Materials Using Differential Scanning Calorimetry, vol. 11, Application Briff DSC, USA, 1994.