

APPENDIX

APPENDIX A



Scene 1 – An Upstate Escape



Scene 2 – The First Crack in the Glass



Scene 3 – Are You Real?



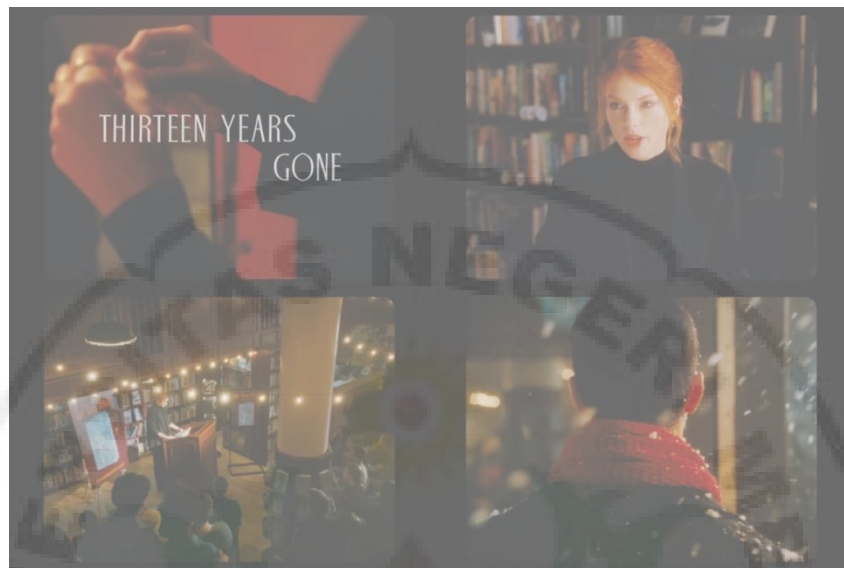
Scene 4 – The Breaking Point



Scene 5 – The Reeling



Scene 6 – The Remembering



Scene 7 – Thirteen Years Gone

THE
Character Building
UNIVERSITY

APPENDIX B

Table 4.1. Visual analysis of data 1

No	Function	Elements	Analytical Notes
1	Representational (Narrative and Conceptual)	1. Narrative:	
		<ul style="list-style-type: none"> • Actor: People, places and things 	<ul style="list-style-type: none"> - A man - A woman
		<ul style="list-style-type: none"> • Vector: Arrows, Bodies, Limbs and Tools 	<ul style="list-style-type: none"> - Talking to each other - Carry the woman on the man's back - Starring at each other
		2. Conceptual:	
		<ul style="list-style-type: none"> • Classification Process • Analytical Process • Symbolic Attributive Process 	<ul style="list-style-type: none"> - The couple - The street - Love and happiness
2	Interactive	1. Gaze:	
		Eye contact between the participant in the image and the viewer	<ul style="list-style-type: none"> - Offer
		2. Size:	

		Social distance	<ul style="list-style-type: none"> - Medium shot - Close shot
		3. Horizontal angle:	
		Relationship between the frontal planes of both participants	<ul style="list-style-type: none"> - Eye-level angle
		4. Vertical angle:	
		The differences possesses of both participants	
3	Compositional	1. Informational value:	
		The placement of elements endows them with the specific informational values that attached to various 'zones' of the image, left and right, top and bottom, centre and margin.	<ul style="list-style-type: none"> - Ideal (the text is on the top of the image)
		2. Salience:	
		The elements are made to attract the viewer's attention of different degrees, as released by such factors as placement	<ul style="list-style-type: none"> - The actors at the centre - Tone

		in the foreground or background, relative size, color, etc.	
		3. Framing:	
		The presence or absence of framing devices disconnects or connects elements of the image.	

Table 4.2 Visual analysis of data 2

No	Function	Elements	Analytical Notes
1	Representational (Narrative and Conceptual)	1. Narrative:	
		<ul style="list-style-type: none"> Actor: People, places and things 	<ul style="list-style-type: none"> - A man - A woman - The friends of a man
		<ul style="list-style-type: none"> Vector: Arrows, Bodies, Limbs and Tools 	<ul style="list-style-type: none"> - Group talking - Hold the man's hand - Upset faces - Hugging
		2. Conceptual:	

		<ul style="list-style-type: none"> • Classification Process • Analytical Process • Symbolic Attributive Process 	<ul style="list-style-type: none"> - The couple - Dining room - Glass
2	Interactive	1. Gaze:	
		Eye contact between the participant in the image and the viewer	<ul style="list-style-type: none"> - Offer
		2. Size:	
		Social distance	<ul style="list-style-type: none"> - Long shot - Medium shot - Close shot
		3. Horizontal angle:	
		Relationship between the frontal planes of both participants	<ul style="list-style-type: none"> - Eye-level angle
		4. Vertical angle:	
		The differences possesses of both participants	
3	Compositional	1. Informational value:	

		<p>The placement of elements endows them with the specific informational values that attached to various 'zones' of the image, left and right, top and bottom, centre and margin.</p>	<ul style="list-style-type: none"> - Real (the text is on the bottom of the image)
		2. Salience:	
		<p>The elements are made to attract the viewer's attention of different degrees, as released by such factors as placement in the foreground or background, relative size, color, etc.</p>	<ul style="list-style-type: none"> - The actors at the centre - Tone
		3. Framing:	
		<p>The presence or absence of framing devices disconnects or connects elements of the image.</p>	

Table 4.3 Visual analysis of data 3

No	Function	Elements	Analytical Notes
1	Representational (Narrative and Conceptual)	1. Narrative:	
		<ul style="list-style-type: none"> • Actor: People, places and things 	<ul style="list-style-type: none"> - A man - A woman
		<ul style="list-style-type: none"> • Vector: Arrows, Bodies, Limbs and Tools 	<ul style="list-style-type: none"> - Dancing - Talking each other - Reading newspaper
		2. Conceptual:	
		<ul style="list-style-type: none"> • Classification Process • Analytical Process • Symbolic Attributive Process 	<ul style="list-style-type: none"> - The couple - Refrigerator light
2	Interactive	1. Gaze:	
		Eye contact between the participant in the image and the viewer	<ul style="list-style-type: none"> - Offer
		2. Size:	
		Social distance	<ul style="list-style-type: none"> - Long shot - Medium shot
		3. Horizontal angle:	

		Relationship between the frontal planes of both participants	- Eye-level angle
		4. Vertical angle:	
		The differences possesses of both participants	- High angle
3	Compositional	1. Informational value:	
		The placement of elements endows them with the specific informational values that attached to various 'zones' of the image, left and right, top and bottom, centre and margin.	- Ideal (the text is on the top of the image)
		2. Salience:	
		The elements are made to attract the viewer's attention of different degrees, as released by such	<ul style="list-style-type: none"> - The happiness vibes - The dancing

		factors as placement in the foreground or background, relative size, color, etc.	
		3. Framing:	
		The presence or absence of framing devices disconnects or connects elements of the image.	

Table 4.4 Visual analysis of data 4

No	Function	Elements	Analytical Notes
1	Representational (Narrative and Conceptual)	1. Narrative:	
		<ul style="list-style-type: none"> Actor: People, places and things 	<ul style="list-style-type: none"> - A man - A woman
		<ul style="list-style-type: none"> Vector: Arrows, Bodies, Limbs and Tools 	<ul style="list-style-type: none"> - Sitting with upset face - Fighting - Touching head - Looking
		2. Conceptual:	

		<ul style="list-style-type: none"> • Classification Process • Analytical Process • Symbolic Attributive Process 	<ul style="list-style-type: none"> - The couple - Bedroom
2	Interactive	1. Gaze:	
		Eye contact between the participant in the image and the viewer	<ul style="list-style-type: none"> - Offer
		2. Size:	
		Social distance	<ul style="list-style-type: none"> - Close shot - Medium shot
		3. Horizontal angle:	
		Relationship between the frontal planes of both participants	<ul style="list-style-type: none"> - Eye-level angle
3	Compositional	4. Vertical angle:	
		The differences possesses of both participants	<ul style="list-style-type: none"> - Low angle
		1. Informational value:	

		<p>The placement of elements endows them with the specific informational values that attached to various 'zones' of the image, left and right, top and bottom, centre and margin.</p>	<ul style="list-style-type: none"> - Ideal (the text is on the top of the image)
		2. Salience:	
		<p>The elements are made to attract the viewer's attention of different degrees, as released by such factors as placement in the foreground or background, relative size, color, etc.</p>	<ul style="list-style-type: none"> - The expression of the actors - Tone colour
		3. Framing:	
		<p>The presence or absence of framing devices disconnects or connects elements of the image.</p>	

Table 4.5 Visual analysis of data 5

No	Function	Elements	Analytical Notes
1	Representational (Narrative and Conceptual)	1. Narrative:	
		<ul style="list-style-type: none"> • Actor: People, places and things 	- A woman
		<ul style="list-style-type: none"> • Vector: Arrows, Bodies, Limbs and Tools 	<ul style="list-style-type: none"> - Facial expressions - Crying
		2. Conceptual:	
		<ul style="list-style-type: none"> • Classification Process • Analytical Process • Symbolic Attributive Process 	- Bedroom
2	Interactive	1. Gaze:	
		Eye contact between the participant in the image and the viewer	- Offer
		2. Size:	
		Social distance	<ul style="list-style-type: none"> - Close shot - Long shot
		3. Horizontal angle:	

		Relationship between the frontal planes of both participants	- High angle
		4. Vertical angle:	
		The differences possesses of both participants	
3	Compositional	1. Informational value:	
		The placement of elements endows them with the specific informational values that attached to various 'zones' of the image, left and right, top and bottom, centre and margin.	- New (the text is on the right of the image)
		2. Salience:	
		The elements are made to attract the viewer's attention of different degrees, as released by such	<ul style="list-style-type: none"> - The relative size of the actor when the actor cried. - The messed up situation in the clip.

		factors as placement in the foreground or background, relative size, color, etc.	
		3. Framing:	
		The presence or absence of framing devices disconnects or connects elements of the image.	

Table 4.6 Visual analysis of data 6

No	Function	Elements	Analytical Notes
1	Representational (Narrative and Conceptual)	1. Narrative:	
		<ul style="list-style-type: none"> Actor: People, places and things 	<ul style="list-style-type: none"> - A woman - A man
		<ul style="list-style-type: none"> Vector: Arrows, Bodies, Limbs and Tools 	<ul style="list-style-type: none"> - Walking - Dancing - Bodies
		2. Conceptual:	

		<ul style="list-style-type: none"> • Classification Process • Analytical Process • Symbolic Attributive Process 	<ul style="list-style-type: none"> - The couple - The streets
2	Interactive	1. Gaze:	
		Eye contact between the participant in the image and the viewer	- Offer
		2. Size:	
		Social distance	- Medium shot
		3. Horizontal angle:	
		Relationship between the frontal planes of both participants	- Eye-level angle
		4. Vertical angle:	
		The differences possesses of both participants	
3	Compositional	1. Informational	

		value:	
		The placement of elements endows them with the specific informational values that attached to various 'zones' of the image, left and right, top and bottom, centre and margin.	- Real (the text is on the bottom of the image)
		2. Salience:	
		The elements are made to attract the viewer's attention of different degrees, as released by such factors as placement in the foreground or background, relative size, color, etc.	- Way the pictures showed the memorizing scene between the man and the woman. - .
		3. Framing:	
		The presence or absence of framing devices disconnects or connects elements of the image.	

Table 4.7 Visual analysis of data 7

No	Function	Elements	Analytical Notes
1	Representational (Narrative and Conceptual)	1. Narrative:	
		<ul style="list-style-type: none"> • Actor: People, places and things 	<ul style="list-style-type: none"> - A woman - A man - Hands
		<ul style="list-style-type: none"> • Vector: Arrows, Bodies, Limbs and Tools 	<ul style="list-style-type: none"> - Speaking - Eyes watching - Hands
		2. Conceptual:	
		<ul style="list-style-type: none"> • Classification Process • Analytical Process • Symbolic Attributive Process 	<ul style="list-style-type: none"> - The book - The red scarf
2	Interactive	1. Gaze:	
		Eye contact between the participant in the image and the viewer	<ul style="list-style-type: none"> - Offer
		2. Size:	

		Social distance	<ul style="list-style-type: none"> - Close shot - Medium shot - Long shot
		3. Horizontal angle:	
		Relationship between the frontal planes of both participants	<ul style="list-style-type: none"> - Eye-level angle
		4. Vertical angle:	
		The differences possesses of both participants	<ul style="list-style-type: none"> - High angle
3	Compositional	1. Informational value:	
		The placement of elements endows them with the specific informational values that attached to various 'zones' of the image, left and right, top and bottom, centre and margin.	<ul style="list-style-type: none"> - Centre (the text is on the centre of the image)
		2. Salience:	
		The elements are made to attract the viewer's attention of different degrees, as released by such factors as placement	<ul style="list-style-type: none"> - The position of the actors - .

		in the foreground or background, relative size, color, etc.	
		3. Framing:	
		The presence or absence of framing devices disconnects or connects elements of the image.	